



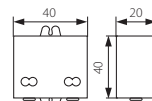
DRIFT LED 0-6W



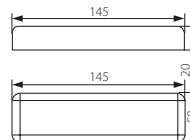
DRIFT LED 3-18W



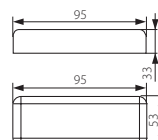
DRIFT LED 0-30W



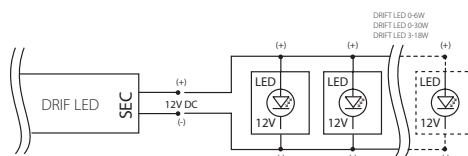
DRIFT LED 0-6W



DRIFT LED 3-18W



DRIFT LED 0-30W



► struttura: plastica

► boîtier: matière plastique

Kanlux	Kanlux		PRI	SEC		Tc max [°C]		[g]
DRIFT LED 0-6W	18040	bianco / blanc	220-240V~ 50/60Hz	DC 0,5A (12V); 0...6W	45	80		32
DRIFT LED 3-18W	08550	bianco / blanc	220-240V~ 50/60Hz	DC 1,5A (12V); 3...18W	50	85		100
DRIFT LED 0-30W	18041	bianco / blanc	220-240V~ 50/60Hz	DC 2,5A (12V); 0...30W	45	75		156



stabilizzazione tensione 12V DC / protezione incorporata contro il cortocircuito e il sovraccarico / modelli DRIFT LED 0-6W e 0-30W allestiti in cavi 0,75mm² lunghezza 15 cm / modello DRIFT LED 3-18W collegati attraverso morsetti 0,5-1,5mm²
 stabilisation d'une tension 12V DC / protection contre court-circuit et contre surcharge incorporé / modèles DRIFT LED 0-6W et 0-30W sont équipés de câbles de 0,75mm², longueur 15cm / modèle DRIFT LED 3-18W connexion par les bornes 0,5-1,5mm²